



Comm Server as a Service

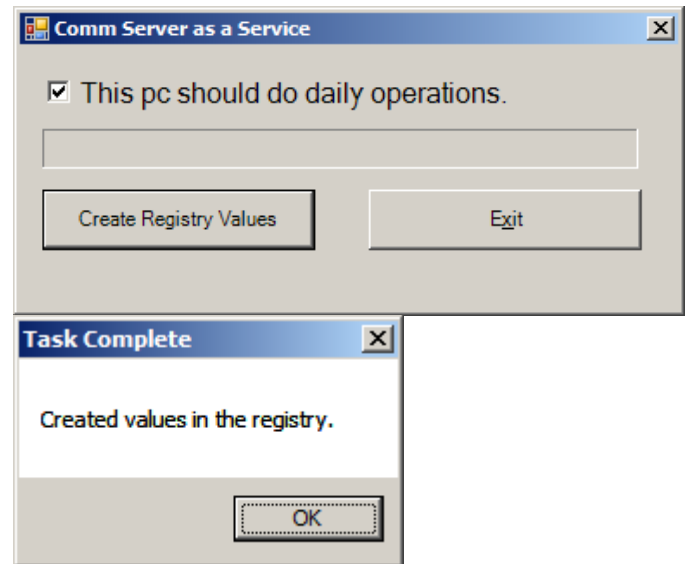
With DSX Software Versions 3.7.34 and SQL Version 4.8.6 and higher, the Communications Server program CS.exe can now be run as a Service. This will allow CS.exe when configured properly to run as a Service on a PC that does not have a user logged into the Desktop.

The Communications Server program typically runs as a process in the background and is usually started by the launching of the Workstation program (ws.exe) and is terminated when the Workstation program is closed. This provides the ability for the Comm Server program to run on a manned or unmanned PC.

Below are the steps involved with setting the Communications Server program up as a Service. There are several options in configuration, but most will be covered in the following material.

1. You must be logged in as an Administrator; you cannot install Services if your login account is not an Administrator.
2. Load the WinDSX or WinDSX-SQL software on the PC that is to perform the Comm Server function. Configure this PC as the Comm Server.
3. Make sure Comm Server is fully operational communicating with controllers and with Client Workstations before configuring it to be a Service.
4. Copy the InstSrv.exe, SrvAny.exe, and CS as a Service.exe programs from the Utilities folder on the distribution media and paste them into the DSX directory where the software was just installed on the Comm Server PC.

5. Double click or Right click and select Run as Administrator on CS as a Service.exe. Select "This PC should do daily operations" unless you are setting another Workstation to perform DailyOps tasks. Click on the "Create Registry Values" button. Click on OK when finished.



6. Go to Start/Windows Admin Tools/Services and verify that the DsxComm service was added. It should appear in the list of Services.
7. Right click on DSXComm and select properties. Change the "Startup Type" to: Automatic (Delayed Start). Go to the Log on Tab and change the "Log On As" to a valid account that has the appropriate privileges for your system. Click OK to save the changes. Close Services. This user account must have full control over the WinDSX folder on the Comm Server and if this is not the shared folder for the system this account must have full control over the shared folder and all sub folders both local and shared and if connecting to a Sql Server, read and write access to the two SQL DataBases AcsData and AcsLog.
Note/// If the system is on a Domain, it requires a Domain User Account with Local Administrative Rights to the Comm Server PC.
8. If you are going to use a shared directory on some other PC, you will have to enter the database path using UNC. You cannot use a shared drive letter to refer to the database path. This also applies to the path for database backups in the Access version of Software.

DataBase as a Service

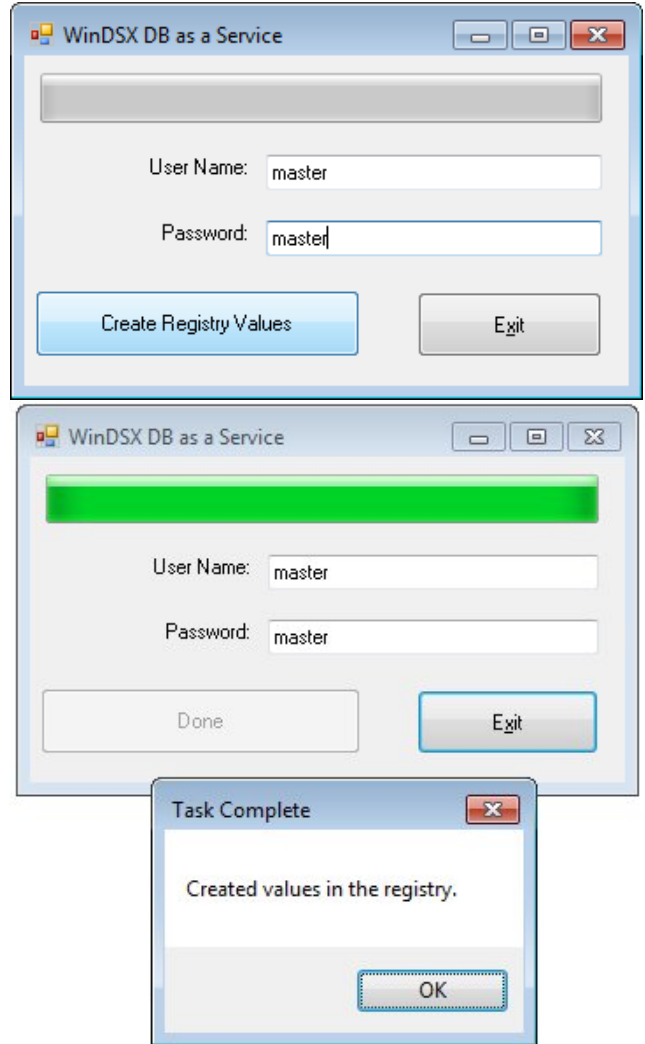
The DSX DataBase program can be configured to run as a Service using the tools provided by DSX. This will allow DB.exe, when configured properly, to run as a Service on a PC that does not have a user logged into the Desktop. Requires 6.0.17 and up.

The DataBase typically runs as an application and is usually started by the launching of the db.exe/dbsql.exe and is terminated when the program is exited.

Below are the steps involved with setting the DataBase program up as a Service. There are several options in configuration, but most will be covered in the following material.

1. You must be logged in as an Administrator; you cannot install services if your login account is not an Administrator.
2. Load the WinDSX or WinDSX-SQL software on the PC that is to perform the Service duties. If this is the Comm Server configure Comm Server to be a Service before creating the DataBase Service.
3. Make sure the DB/DBSQL program is fully operational and able to make database changes before configuring it to be a Service.
4. Create an API password profile that can view an image source. Create an Operator Login and assign it the API profile. 6-15 alphanumeric and keyboard characters.
5. Copy the InstSrv.exe, SrvAny.exe, and WinDSXDBasService.exe programs from the Utilities folder on the distribution media and paste them into the WinDSX directory where the software was just installed on this PC.
6. Double click or Right Click and select Run as Administrator on WinDSXDBasService.exe. Enter the DSX Operator Name and Operator Password for the DataBase Service to use for DSX program access and permissions. This must be a Password stored in WinDSX.
7. Click on the "Create Registry Values" button. When this buttons changes to **Done**, Click on OK and the program will close.

8. Go to Start/Windows Admin Tools/Services and verify that the DSXDBAS service was added. It should appear in the list of Services.



9. Right click on DSXDBAS and select properties. Change the "Startup Type" to: Automatic (Delayed Start). Go to the Log on Tab and change the "Log On As" to a valid account that has the appropriate privileges for your system. Click OK to save the changes. This could be the same service account assigned to the DSXComm Service. Close Services.
Note!!! If the system is on a Domain, it requires a Domain User Account with Local Administrative Rights to the Comm Server PC.
10. Place API import files in the Shared WinDSXAPI folder or in the Local WinDSXAPI folder on the PC where DataBase runs as a Service. DataBase must be run as a Service to process API import files.
11. Start the DSXDBAS Service.